

Islandia® SE

All the comforts of home, like a stand up changing room/bathroom. Along with a 430 hp Rotax 4-TEC engine package to take you far from it.

RECREATION | 2009



Sanddollar

Specifications

DIMENSIONS

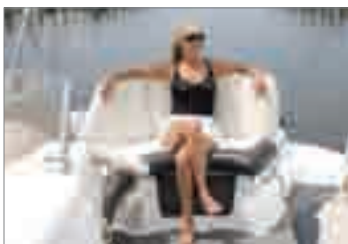
Length	22' / 6.7 m
Beam	8' 3" / 2.52 m
Draft	12" / 30.5 cm
Dry weight	3,450 lbs / 1,565 kg
Seating capacity	12
Fuel capacity	53 US gal / 200.6 L

ENGINE

Model	Rotax® 1503 4-TEC® [x 2]
Horsepower	430 hp

Highlights

- Rear reboarding platform w/2-step ladder
- Freshwater shower
- Rear seats convert to sun pad
- Satellite-ready AM/FM/CD stereo w/MP3 port and 4 speakers
- Convenience center w/removable cooler
- Changing room w/porta-potty
- Abundant on-board storage
- Front boarding platform w/3-step ladder
- Stereo remote – swim platform



Convertible sun pad



Convenience center



Changing room & porta-potty



Freshwater shower

Overall Specifications

DIMENSIONS

Length	22' / 6.7 m
Beam	8' 3" / 2.52 m
Draft	12" / 30.5 cm
Dry weight	3,450 lbs / 1,565 kg
Storage capacity	80 cu ft / 2.26 cu m
Seating capacity	12
Weight capacity	1,800 lbs / 816 kg
Fuel capacity	.53 US gal / 200.6 L

DIMENSIONS (ON TRAILER)

Length	25' 2" / 7.67 m
Width	8' 6" / 2.59 m
Height	7' / 2.13 m
Gross weight	4,980 lbs / 2259 kg

ENGINE

Model	Fuel injected, Rotax 1503 4-TEC (2)
Displacement	1,494 cc
Horsepower	430 hp SCIC
Cylinders (/engine)	3
Max RPM (/engine) Std	8,000
Octane no.	91
Emission level	CARB 3-Star
Cooling system	Closed-Loop Cooling System

ELECTRICAL

Generator	30 amp / 380 W
Battery	12 V

Islandia SE

RECREATION | 2009



HULL & DECK

Material	Composite FRP
Vinylester barrier layer	Std
Full fiberglass stringer	Std
Graphics	Std
Deadrise	21°
Color gel-coat	Sanddollar

PROPULSION

Jet pump type:	
Axial flow	Single stage
Pump diameter	6 1/4" / 15.63 cm
Impeller:	
Material	Stainless steel
Outside diameter (mm)	159 ± .07
Reverse system	Std

Equipment

HULL & DECK

- Stringer system – composite FRP, foam filled
- Cleats – chrome (6)
- Cup holders (9)
- Rub rail – (Black)
- Bow rails – stainless steel
- Stern rail – (1)
- Grab handles (10)
- Non-skid decking
- Navigation light – bow side lights
- Docking lights
- Courtesy lights (4)
- Tow eyes – stainless steel bow & stern
- Tow hook – stern
- Starboard door - rear
- Reboarding ladder – rear (2-step)
- Reboarding ladder – bow (3-step)
- Engine access
- Engine blower (2)
- Auto bilge pump

STORAGE

- Anchor – front
- Ski locker, lockable
- Under seat
- Side compartment
- Convenience under sink
- Nets – bow & cockpit

CONTROL STATION

HELM

- Steering – Custom
- Horn
- Separated shift & throttle lever
- Battery switch
- Fuse box
- DESS magnetic lanyard key

INSTRUMENTATION

- Gauges – backlight & anti-fog
- Fuel level
- Overheat engine warning
- Speedometer – 88 mm
- Tachometer – 88 mm (2)
- Analog fuel – 47 mm
- Depth finder

COCKPIT

- Carpet – snap-in
- Dash finish – Burlwood
- Outlet – 12 volt accessory (1)
- Cooler – removable
- Table
- Table mount – bow
- Sink / counter
- Change room

SEATING

Driver Seat

- Track & swivel
- Buddy

Passenger Seat

- Bench

STEREO & SOUND

- Stereo system – satellite-ready
- Speakers – bow (2)
- Speakers – cockpit (2)
- MP3 port
- Stereo remote – swim platform

CANVAS & MISCELLANEOUS

- Bimini top
- Windshield – driver side, fixed
- Warranty (1 yr)

CERTIFICATIONS

- NMMA
- CE

TRAILER

- Tandem axle
- Disc brakes
- Swing-away tongue
- Galvanized trailer

Options

- Mooring cover
- 2nd axle disc brakes
- Warranty (3 years)

