

A fully loaded wakeboard boat right out of the box, with enough power and convenience for whatever else you're into. Optional 510 hp engine package.



Viper Red / Black

Specifications

DIMENSIONS

Length	23' 6" / 7.16 m
Beam	8' 9" / 2.67 m
Draft	12" / 30.5 cm
Dry weight	3,775 lbs / 1,712 kg
Seating capacity	12
Fuel capacity	53 US gal / 200.6 L

ENGINE

Model	Rotax® 1503 4-TEC® [x 2]
Horsepower	430 hp or 510 hp

Highlights

- Satellite-ready AM/FM/CD stereo w/MP3 port, w/125 watts/channel amp., 6 speakers, 4 tower speakers, P.A. and remote
- PerfectPass WakeboardPro speed control
- Sun deck pad walk-through transom
- Wakeboard tower
- Wakeboard racks (2)
- Cockpit-controlled WakeBoost [1,000 lbs / 454 kg]
- Heater
- Fold'n Stow walk-through door
- Bimini top
- Snap-in carpet
- Cockpit & tonneau cover
- SS cup holders
- SS rub rail
- Depth finder



Tower



PerfectPass® WakeboardPro



WakeBoost



Stainless steel hardware

Overall Specifications

DIMENSIONS

Length	23' 6" / 7.16 m
Beam	8' 9" / 2.67 m
Draft	12" / 30.5 cm
Dry weight	3,775 lbs / 1,712 kg
Storage capacity	67 cu ft / 1.90 cu m
Seating capacity	12
Weight capacity	2,283 lbs / 1,036 kg
Fuel capacity	.53 US gal / 200.6 L

DIMENSIONS (ON TRAILER)

Length	26' 10" / 8.18 m
Width	8' 9" / 2.67 m
Height: Tower down	7' 6" / 2.29 m
Tower up	10' 10" / 3.30 m
Gross weight	5,508 lbs / 2,498 kg

ENGINE

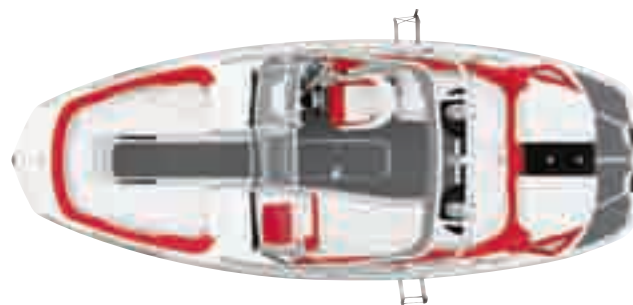
Model	Fuel injected, Rotax 1503 4-TEC (2)
Displacement	1,494 cc
Horsepower: Std	430 hp SCIC
Opt	510 hp SCIC
Cylinders (/engine)	3
Max RPM (/engine): Std & Opt	8,000
Octane no: Std & Opt.	91
Emission level	CARB 3-Star
Cooling system	Closed-Loop Cooling System

ELECTRICAL

Generator	30 amp / 380 W
Battery	12 V

230 WAKE

SPORT | 2009



HULL & DECK

Material	Composite FRP
Vinylester barrier layer	Std
Full fiberglass stringer	Std
Graphics	Premium, WAKE graphics
Deadrise	21°
Color gel-coat	Black hull / White deck

PROPULSION

Jet pump type:	
Axial flow	Single stage
Pump diameter: Std & Opt	6 1/4" / 15.63 cm
Impeller:	
Material	Stainless steel
Outside diameter (mm)	159 ± .07
Reverse system	Std

Equipment

HULL & DECK

- Stringer system – composite FRP, foam filled
- Cleats – stainless steel pull-up (6)
- Cup holders – stainless steel (10)
- Rub rail – stainless steel
- Bow rail – stainless steel
- Grab handles (9)
- Coaming box (4)
- Non-skid decking
- Navigation light
- Courtesy lights (7)
- Wakeboard tower
- Wakeboard racks (2)
- WakeBoost (twin 1,000 lbs total)
- Tow eyes – stainless steel bow & stern
- Tow hook – stern
- Walk-thru – bow & rear
- Reboarding ladder – rear (2-step)
- Swim platform mat
- Engine access
- Engine blower (2)
- Auto bilge pump

STORAGE

- Anchor
- Ski locker, lockable
- Under seat
- Sunpad, lockable
- Console
- Nets – bow & cockpit

CONTROL STATION

HELM

- Steering – Custom
- Steering – tilt
- Horn
- Separated shift & throttle lever
- Battery switch
- Circuit breakers
- DESS magnetic lanyard key

INSTRUMENTATION

- Gauges – backlight & anti-fog
- Fuel level
- Overheat engine warning
- Speedometer – 88 mm (PerfectPass[®])
- Tachometer – 88 mm (2)
- Analog fuel – 47 mm
- PerfectPass WakeboardPro
- Depth finder
- Water temperature

COCKPIT

- Carpet – snap-in
- Dash finish – Silver / Chrome
- Dash mat
- Mirror
- Outlet – 12 volt accessory (2)
- Heater
- Glove box
- Cooler – removable

SEATING

- Driver Seat
- Track & swivel
- Flip-up bolster

COCKPIT (Cont'd)

SEATING

- Passenger Seat
- Rear-facing bench

STEREO & SOUND

- Stereo system – satellite-ready
- Speakers – bow (2)
- Speakers – cockpit (4)
- Tower speakers (4)
- MP3 port
- Stereo remote with display – helm
- Amplifier
- P.A.

CANVAS & MISCELLANEOUS

- Cockpit cover
- Tonneau cover
- Bimini top
- Door – Fold 'n Stow
- Windshield – fixed
- Warranty (1 yr)

CERTIFICATIONS

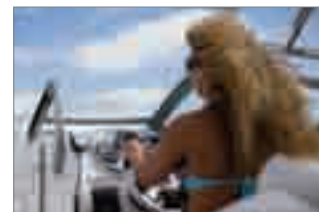
- NMMA
- CE

TRAILER

- Tandem axle
- Disc brakes
- Chrome wheels
- Galvanized trailer

Options

- Mooring cover
- Windshield – retractable
- Warranty (3 years)
- 2nd axle disc brakes
- Custom trailer



Retractable windshield system